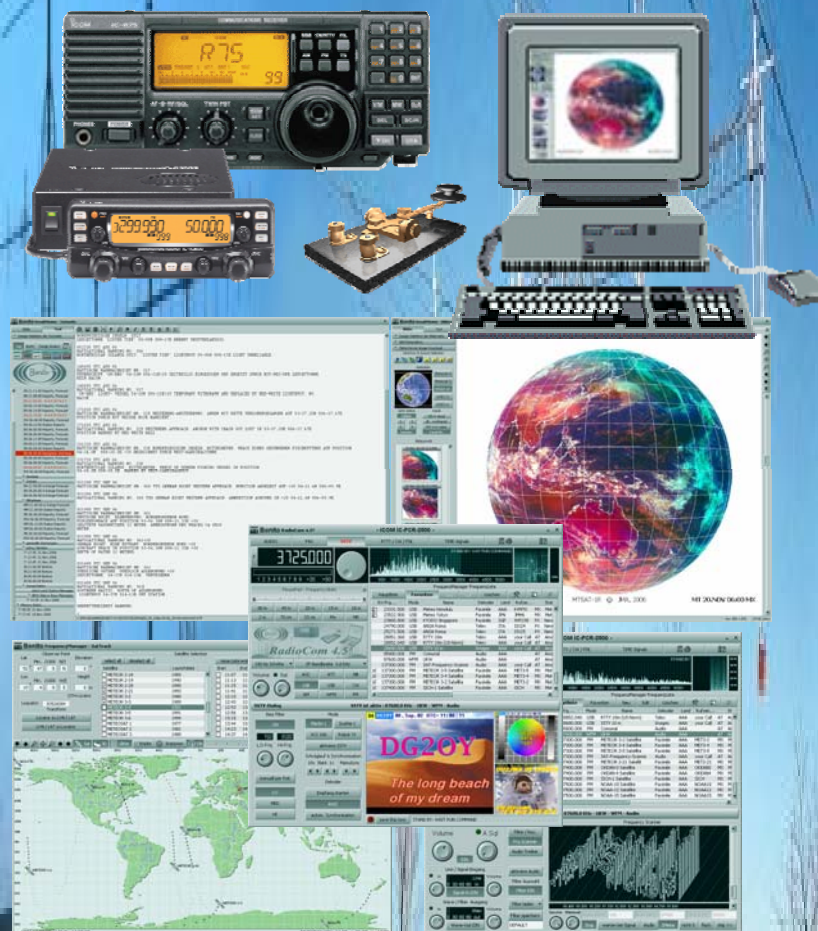


# Manual



# RadioCom 4.5<sup>2</sup>

DSP-Filter Decoding with theComputer  
RTTY-, CW-, PSK-, FAX-, SSTV- and TimeSignal- Decoder,  
Spectrum-Analyser, Equalizer-Filter, Freq.Scanner and RadioControl  
with Frequency-Managment, ScheduleManger and SatTraking  
incl. InterNet Satellite Image DownLoad-Service



Contents	
The first steps.....	1
Connecting an antenna to the SSB radio .....	1
Installation.....	2
Registration + Update/Data-Service: .....	3
RadioCom Setup.....	4
Short Info:.....	4
Expansion and Upgrade: .....	4
RADIO CONTROL .....	5
Tab Tool Window: .....	6
RadioCom 4.5 Workbench structure.....	6
Transmit and Receive Frequency:.....	7
Program Preferences, SheduleList and Statracking.....	8
Program Preferences: .....	8
Deleting old data after selected days:.....	8
ScheduleList.....	9
SatTracking.....	10
Reception, Adjustments and Tuning:.....	11
Signal Tuning – What is a useful signal?.....	11
AUDIO-DECODER .....	12
Audio-Recorder: .....	13
Filter / Equalizer: .....	13
Frequency Scan:.....	14
Frequency Spectrum:.....	15
X/Y Tuning Display: .....	16
Q/B PSK:.....	16
RTTY-DECODER.....	17
FAX-DECODER .....	19
Picture Receiver:.....	19
Save: .....	19
Save this now:.....	19
Module and Slant Correction (IOC Part):.....	19
Drum Speed:.....	19
Shift and Center Frequency:.....	19
Filter, Bandwidth: .....	20
Spectrum Analyzer:.....	20
Slant Correction .....	20
CW DECODER .....	21
SSTV DECODER .....	22
Tuning: .....	22
Mode: .....	23
SSTV-FREQ:.....	23
AVIS: .....	23
SSTV SLANT Correction: .....	23
RESULVIEWER .....	24
Images .....	24
Directory and source selection.....	25

Save and print FAX.....	26
+/- Zoom.....	26
Synchronize .....	26
Skew correction.....	26
Crop image.....	26
Invert image .....	26
Rotate image.....	26
ICO RPM:.....	26
Contours, Soften, Sharpen, Brightness .....	26
Undo / Redo .....	27
Image Maniputation .....	27
Text .....	28
Icon bar Text .....	29

### **Support, Upgrades and Sales (U.S.A.)**

## **COMPUTER INTERNATIONAL**

St. Johns, Michigan 48879 U.S.A.

[radiocom@computer-int.com](mailto:radiocom@computer-int.com)

[www.computer-int.com](http://www.computer-int.com)



[www.bonito.net](http://www.bonito.net)



[www.meteoserver.net](http://www.meteoserver.net)

## The first steps

### Basic requirements:

An operating system: Windows 2000/XP or Windows NT 4.0 SP3

An IBM compatible PC with Intel® Pentium III- CPU 450 MHz

Other minimum requirements are stipulated by the system.

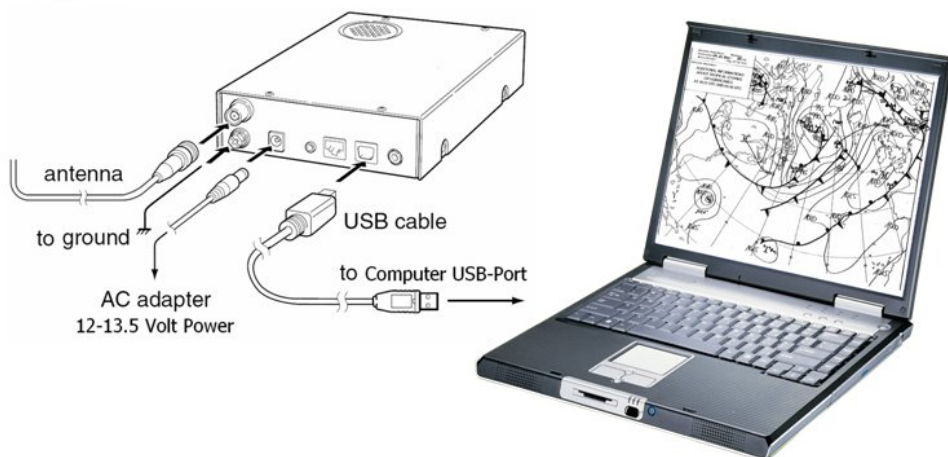
## IMPORTANT

If you want to use an ICOM PCR1500 / 2500, read the ICOM Manual carefully and follow **ALL** the instructions until it's completely installed. After the succeed Installation, the ICOM Driver change the Soundcard settings and you can't hear other Sounds anymore. To change it back, go to standard settings: Start\Setting\Control Panel\Sounds and Multimedia Click "AUDIO" and choose under "Sound Playback" the Soundcard of the PC and do the same with "Sound Recording".

**DON'T USE THE ICOM SOFTWARE WHILE USING RadioCom!!!**

## Connecting the SSB radio

If you have an amplified antenna please connect it in the proper way.



## Installation

After turning the radio on, you can now insert the CD. The following window appears:

The CD-Key is burned on the CD and appears automatically.

Select now your radio from the „radio selection“ list.

With „Comport Selection“ you can now select the correct Comport, in case RadioCom was not able to find it and displays an error message.

If the Setup displays error messages you have to select the Comport manually.



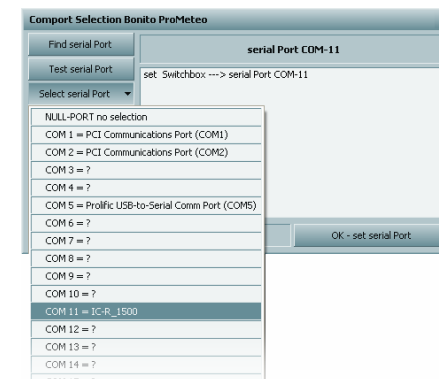
### Manual Comport Selection

„Find serial port“ will prompt RadioCom to search for the Radio. „Test serial port“ enables you to test the connectivity of the COM-port. „Select serial port“ assigns a concrete COM-port number to a particular device. For the ICOM PCR/R 1500 or 2500 Radios you have to select the Comport of your Radio.

### Audio Output / Input Selection:

If you have different Soundcards or the ICOM PCR/R 1500/2500 installed, you can choose the Audio Input Card here. You can choose the Audio Input Jack (Line IN or Microphone) here as well.

When you have completed your selections you are ready to press the „install“ button. RadioCom 4.5<sup>2</sup> will now install. When the installation is complete, a connection layout will open automatically in PDF format. You will have one icon on the Windows desktop.



## Registration + Update/Data-Service:

*The Program RadioCom must be switched off!*

Right after the Installation an Internet Registration Window appears automatically. You have to register first, before you can run the Program.

RadioCom is using some Recourse (for example Frequency lists, Timer lists and Program updates), which you can download without extra costs via the Internet. There you simply have to click "Update" and the following window appears.

Now, you have to register your self. Please click the Button "Registration". If you ignore the entries, you cannot be identified and the service is always lost in the case of a problem. If you want to remain anonymous, set under name, road and city your own passwords. If no email will register, but only @ and one point, you'll not receive an email with the access code, with which you can reactivate a registration or transfer the code to another computer.

The computer saves the access code in the Windows registry. You can see and copy and keep it surely at any time, in order to be able to realize a reactivation of the Registration.

The suffix changes after each Internet update. This should be absolutely considered, if you uninstall the program or operate it on several computers.

For such a change or the error message "SUFFIX\_OPEN\_ERR" the manual activation must be called and the access code be entered by hand, because a Registration by Internet is only possible one time.

If the suffix should have been lost, it is possible to use a wrong suffix, in order to eliminate this problem. However this could happen only 8 times within 90 days.

*After the registration the PCR1500/2500 is paired with the Software. You can't use a different PCR 1500/2500 with this Software anymore.*

## RadioCom Setup

The installation program is capable of even more. If you should ever change to a different radio, reinstall or update RadioCom 4.5<sup>2</sup> via the Internet, you don't have to insert the CD all the time. You can easily open the RadioCom Setup.

You'll find the RadioCom Setup here:

**[Start] [(All) Programs] [Bonito RC45] [Setup RadioCom]**

**Changing the radio:** You can select a different radio in „Channel selection“ and close it. You don't have to reinstall.

**Reinstall:** Go to „keep adjustments“ and select whether audio or fax skew were okay. Press „install“.

**Update service:** You can update ProMeteo via the Internet by pressing the "Update" button. ProMeteo automatically downloads the required updates and installs them. Before updating the Software you have to register your self first.

## Short Info:

These operating instructions are not for amateur radio. An assumption is made that you know how to operate your radio. If not, you should first get used to using your radio.

RadioCom includes small helps. They will show up when the mouse is on a tool bar or window. A popup called ToolTip will display. This will show the function of the respective toolbar or window. If you press the right mouse button from the 'Context Menu' you will get further information. This is important for optimal use.

## Expansion and Upgrade:

The program is built in that way, that later updates will extend and expand the basic functions. Provided are sending and receiving programs, analyzing tools for the radio data decoding and new functions. The update service is only available for registered user and can be done with the RadioCom Setup. You can upgrade your RadioCom to a higher Version any time.

*In the moment already RadioCom 6.x is available.*

**For Upgrades and Sales in the USA contact:**

**COMPUTER INTERNATIONAL**  
St. Johns, Michigan 48879 U.S.A.  
radiocom@computer-int.com  
www.computer-int.com



## Radio Control



The main window includes the most important control elements for controlling the radio. You should be familiar with these functions. Your radio may not support/have all functions. Frequencies can be entered or dialed up and down by clicking the tuning knob on the left for down or the right for up. The **step** size is determined from a drop down menu when you click the button.

The **NB** button (NOISE BLANKER) will eliminate static and crackling noise. With **AGC** you can stabilize the incoming signal if the station is not constant. The signal strengths can be controlled on the scale high left on the screen. If a signal is above S7 you can

use the button **ATT** (Attenuation). This reduces the antenna input if the signal is too strong and the receiver is prone to distortion.

The UBS, LSB, CW, AM, FM, WFM are modes. For most digital modes you should use USB with a bandwidth of 3 kHz **IF**. AM is used for normal radio stations on short wave where 6 kHz is used. Air traffic stations use 15 kHz on frequencies from 87 to 106 MHz.

Different modes will be activated or deactivated by the program, depending on the radio you are using. **SQL** is the squelch, which eliminates interference when there is no signal being received. **VOL** is the volume control. It controls the volume function on the soundcard, not the radio.

The band selectors 80m - 23cm switch to a frequency, which is dependent on the decoder mode of operation (RTTY, CW, PSK, FAX, SSTV). On the field **MousePad - FrequencySlider** you must click and holds the mouse-button and then slides to the left or right. Depending upon that, as far the frequency will push you more or less strongly adjusted. The switching surface X. places the frequency movement 100 times more largely.

## Tab Tool Window:



The illustrated fields are for choosing the different functions of the program. They are:

- AUDIO** : sound adjustments, speaker, equalizer  
; Filter, audio recorder and frequency scanner
- FAX** : receiving faxes and setting the parameters
- SSTV** : receiving SSTV and setting the parameters
- RTTY** : receiving RTTY and setting parameters
- CW / PSK** : receiving CW and PSK and setting parameters
- TIME-Signals** : Time signal decoder for German DFC77 und British MSF

ResultViewer:

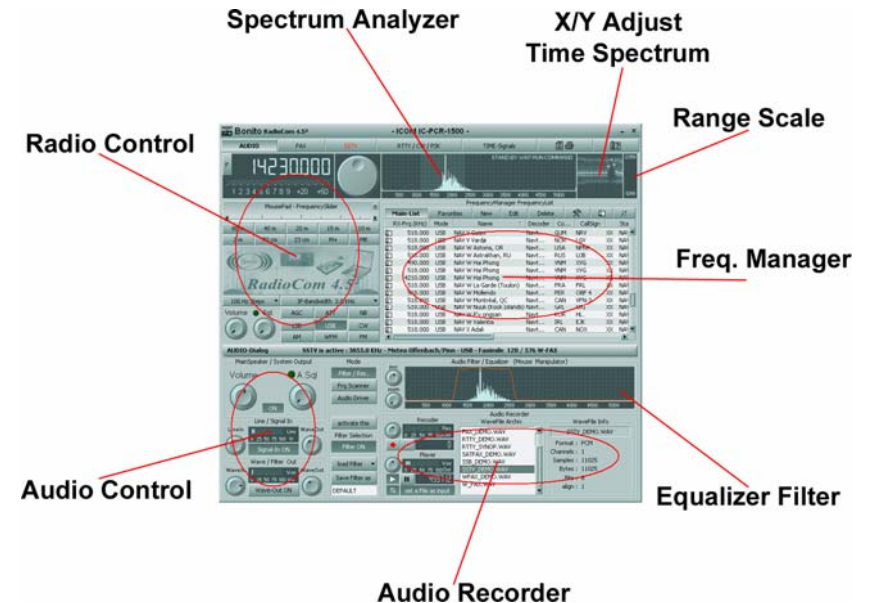


Manual:



The program and the DSP filter will work right only by activating the particular decoder. The FAX is activated in the example. The result is that only the FAX window is actually working now. Other windows can be made visible but they do not make useful displays.

## RadioCom 4.5 structure



## Transmit and Receive Frequency:

FrequencyManager FrequencyList							
Main-List	Favorites	New	Edit	Delete			
RX-Frq.(KHz)	Mode	Name	Decoder	Co...	CallSign	Sta	
14641.000	USB	SNY Madrid	Morse	ESP	EBA	MX	Me
9100.000	USB	SPK Phnom Penh	Telex	KHM	SPK14	PX	Pre
9254.000	USB	SPK Phnom Penh	Telex	KHM	SPK72	PX	Pre
9828.000	USB	SPK Phnom Penh	Telex	KHM	SPK10	PX	Pre
28680.000	USB	SSTV 10 m	Imag...	AAA	your Call	AT	Am
21340.000	USB	SSTV 15 m	Imag...	AAA	your Call	AT	Am
144500.000	USB	SSTV 2 m	Imag...	AAA	your Call	AT	Am
14230.000	USB	SSTV 20 m	Imag...	AAA	your Call	AT	Am
1296500.000	FM	SSTV 23 cm	Imag...	AAA	your Call	AT	Am
7040.000	USB	SSTV 40 m	Imag...	AAA	your Call	AT	Am
433400.000	USB	SSTV 70 cm	Imag...	AAA	your Call	AT	Am
3730.000	USB	SSTV 80 m	Imag...	AAA	your Call	AT	Am
12121.000	USB	SUNA Khartoum	Telex	SDN	YOM21	PX	Pre
15731.000	USB	SUNA Khartoum	Telex	SDN	RWM74	PX	Pre

You have a list, which contains the important data for the receiver and transmitter. By double clicking on the frequency line you transfer that data to the program and the radio. If you press the space bar you will switch to that the frequency. Double click/ENTER will start the respective decoding process. If you press the header-line (e.g. Name) the list will be sorted.

**Edit Frequency-List-Entry**

Get Settings Cancel OK, set --> List Entry

Frequency (Hz) Radio-Mode IF-Bandwidth  
12750.000 USB 3 KHz

Station Name Tuning Steps  
USCG Boston 100 Hz

Station Type Call  
MX Meteo Station NMF

Country / Land  
UKR UKRAINE  
ARE UNITED ARAB EMIRATES  
URY URUGUAY  
USA USA, UNITED STATES OF AMERICA  
UZB UZBEKISTAN  
VUT VANUATU  
VAT VATICAN CITY STATE, HOLY SEE

Commentary  
1400-2215, see the Bonito ScheduleList

AUDIO FAX SSTV RTTY CW/PSK TIME

IOC RpM  
267 288 190 331 48 60 90  
352 576 381 662 120 180 240

Center Frq. (Hz) Width (Hz) FM ( WFax )  
1900 800 AM ( SatFax )

You can make a new entry, change the existing data, save, sort or delete entries by using the right mouse button and choosing the function you want from the popup menu.

The correct way to enter new data is to select the mode, receive frequency and adjust the parameters for proper operation. When you are satisfied choose "ADD A NEW LIST ITEM" from the context menu and all the parameters in the appearing window should be entered. All that you enter here will be loaded by a double click from now on.

## Program Preferences, ScheduleList and Sattracking

In this part of the program, you will find the following Buttons:



### Program Preferences

Here you can make basic adjustments to the program.

#### Deleting old data after selected days:

In order to prevent a build-up of old data on your computer you can have certain data deleted at certain times. The pre-selected value serves as a good average.

#### Tuning Offset:

If your radio has a Frequency offset you can enter the value in Hz here

#### Save or Load the Configuration

Here can save or reload the Configuration.

**Program Preferences**

Delete old data after selected days:  
rtty / cw text fax images  
never never  
download images SSTV images  
never never

tuning offset for exact adjustment  
frequency offset : 0 Hz

Security of Configuration  
save my Configuration  
reload my saved Configuration

Color Design / Outfit  
day night change Design  
scr1 scr2 scr3 scr4 scr5 scr6

Bonito

### Color Designs

With this little tool you are able to choose a different design for your RadioCom 4.5<sup>2</sup> by simply clicking one of the preinstalled Screens or do your own color with the "Color picker". Choose a program part of the dropdown list and change the color with the Mouse. After you have a created a nice Design, you can save and use it or share with your friends. Have fun with it.

**System Design Colors**

scr1 scr2 scr3 scr4 scr5 scr6

screen bright. satur. night scopes bright. line buttons flatstyle undo  
1 1 1 1 1 1 night day

color picker & selection  
ausgewählte Designfarbe hat keinen Effekt

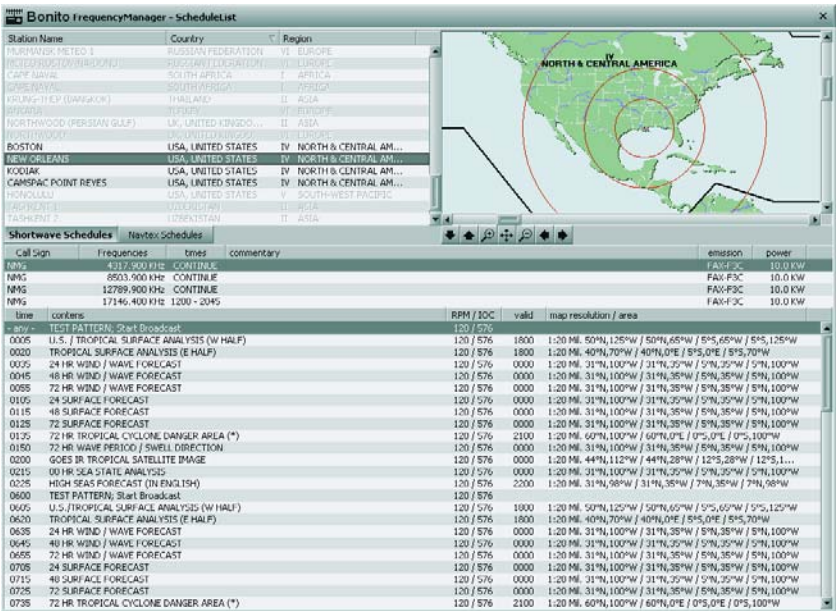
load save set default Cancel OK


Here are some examples:



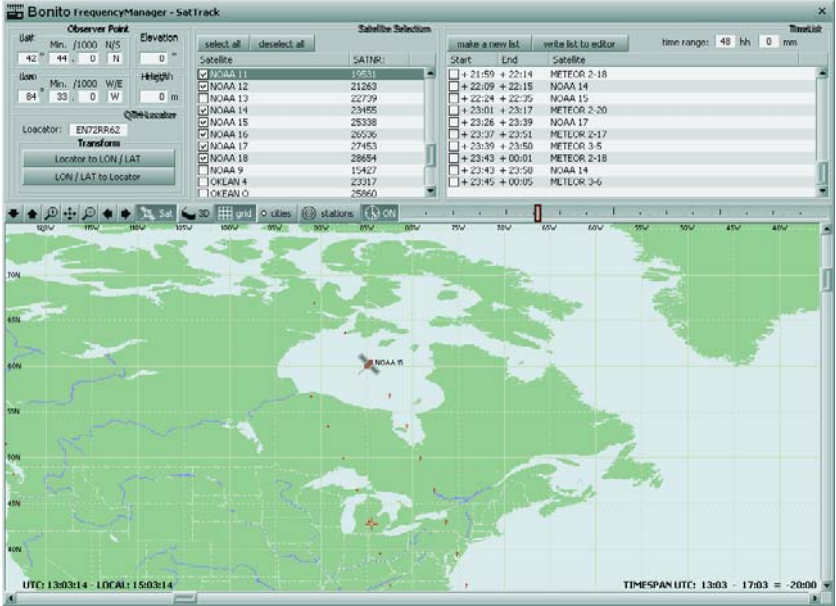
ScheduleList


The „BONITO ScheduleList“ is the proper tool. Since RadioCom 4.5.2 this tool is no longer limited to weather fax but has been expanded to include RTTY and NavTex.



If you press this button  the „BONITO ScheduleList“ will open. This allows you to receive a Fax Transmitter at your position. Now expand your area on the global map. The radio stations you can receive in your area are automatically marked in the list. If you select one of these stations, all frequencies of this station will be displayed, including all transmitting times. Clicking on one time slot in the transmission schedule will show you the map area covered by this particular transmission. All times indicated are in UTC.

SatTracking



If you press this button  the BONITO Sat tracking will open. If you want to work with satellite faxes directly from satellites use SatFax. You will have to know where a satellite is and when it is visible. Therefore you will need some reference data. The most important file is named ‘Satdata.2li’ and is located in the Data folder. You can update this file regularly. There are found on the Internet and are called Keplerian elements. Each time you update your RadioCom these Keplerian elements will be updated as well. The entries for the satellite basic elements are located in the main frequency list. Only the numbers will be saved to make an update possible. Your position will be entered as ‘QTH locator’ and later you can press ‘Locator to LON/LAT’. If you press the ‘LON/LAT to Locator’ button the entered geo coordinates will be converted in the ‘LOT/LAT Locator’. You can find the latest time for the satellites in the ‘Frq & Time’ window. You can determine from the ‘Basic Data’ list which satellites will be used by checking the box next to the entry. You will be able to find your satellites on the world map. The dots are the flight path and the yellow marked points show you when each satellite is visible. You can choose different views with the buttons next to the world map. The mouse works in the window as well.



## Reception, Adjustments and Tuning:

The quality of reception is affected by a lot of factors. The antenna and the quality of the receiver are the biggest. A good antenna can be constructed by taking 6 meters of wire and connect it to the center conductor of a piece of coax long enough to reach from outside to the radio. Take another piece of wire 6 meters long and connect it to the shield of the coax. Make sure the connections are waterproof and will hold up to the pull from the wire. Secure the ends of the wire to a rope and raise both ends off the ground making a 'T'. The higher the better. This is a simple DIPOLE antenna.

There are different types of antennas, verticals, active antennas, loop antennas and so on. We offer a special antenna, but we never say that our antenna is better than a perfect wire. Our antenna is only better than all other compromises when a wire antenna can't be constructed. And they all were tested.

At first try a clear frequency. If you receive a bad signal you may have to optimize the antenna or you might wait until the conditions are better. If you try and work with a signal that has lots of interference it will be difficult to interpret the elements of the tuning and the functions.

*"How to adjust something you can't see or hear?"*

If you have adjusted the signal as best as you can with good receiving conditions you can also decode it by worth conditions. (???) The tuning and the parameters in the frequency list are already saved and because of that you can call them up again. It will not be necessary to make the adjustments again. By doing that you will see what the decoder can do. It can work well because the decoder does not register interference's like the human ear. The speaker will reproduce everything exactly like it comes in. So you hear a lot of things that the DSP filters out.

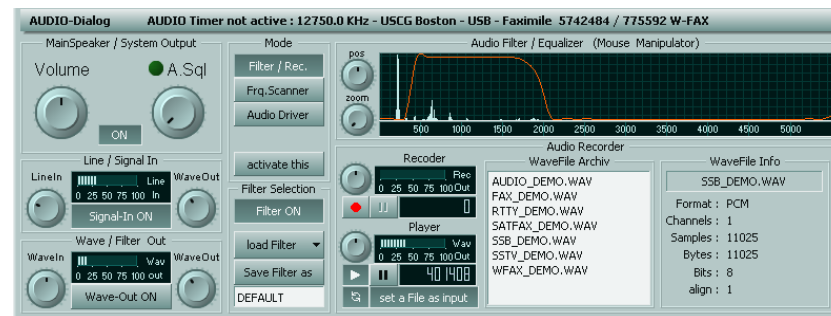
## Signal Tuning – What is a useful signal?

A digital signal is comprised of different sounds or pitches. The distance in time between the first and the last tone is called bandwidth. Good digital signals will always be concise and different from all other sounds. You will have figure out what kind of signal it is: CW, RTTY, SSTV or FAX.

You will soon be able to detect what the signals are by the sounds. We only decode NAVTEX SITOR and RTTY. But there are a lot of different modes sent over the air. We do not decode these (BUT OPTIONS ARE AVAILABLE). Therefore, a meaningless signal may be a useful signal. There are signals, which we are decoding correctly, but the letters have no meaning. It might be a foreign language or a cipher code, which would be not readable.

Even if you receive correct synoptic number codes you may think they are useless. This data can be weather data, which will be automatically decoded by the program.

## Audio-Decoder



The essential characteristic of the program is the sound processing system together with DSP from your soundcard. This is called DSP. You need to know following things: The signal will be read in with line-in (or with the microphone input). Then it will be checked 11000 times per second which parts of the frequency-spectrum contains the signal. This is what we call sample-frequency. Then it goes through a number of different complex software processes, which we call filter. The signal is giving out parallel with listening. You can choose if you want to hear the original audio (**Signal-IN ON**) or the filtered audio (**Wave-Out ON**). If you want to listen to the output, you need a bidirectional soundcard. In this case it's advisable to deactivate **Signal-IN ON**. Pay attention to adjust the controller that way, that there is no over modulation (red area). To turn off the receiver-listening tone use the switch **Signal-IN ON**. This one turns off the received signal only. Other tones from the system are still hearable. If you turn off the speaker (**ON**), there is no tone out of the speaker - and no sound system message too.






These options normally can be adjusted with the audio-mixer driver of the sound volume control. In this program part we try to respond these sound-drivers. The program tries to find the necessary components. It didn't work always. Therefore we offer an expedient. Some drivers appear, if you press the **Driver** button.



## Audio-Recorder:

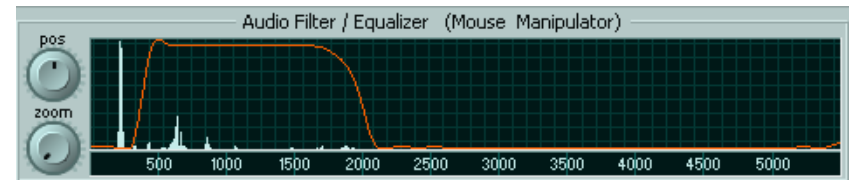


The signal recorder is used for recording or playing back signals.

-  Play
  1. Press = Playback of a wave file
  2. Press = Stop
-  Pause
  1. Press = Stop Playback
  2. Press = Playback will go on
-  Loop
  1. Press = Repeats playback
  2. Press = Playback one time

If you press the 'WavePlay as Signal In' button in the Audio Control menu the wave file becomes the signal input. The volume can be adjusted by the volume control. Pressing the record button with the REC symbol (the Red Point) activates a recording of the signal. The input signal is recorded and the recording volume depends on the control next to the record peak meter. If a wave file is running and the button 'WavePlay' is active as 'Signal In' in the audio control panel the signal will be recorded as the input. There is a slide control below the audio scope that will allow you to move through the wave file. In the compressor control panel you can select the type of compression you want to use if you desire. For exact analysis of a signal you should use PCM 11025 HZ / 16 bit, mono, 22 kb/s mode. During some compression types will loose important parts of the signal. The file list has got a context menu for delete, rename, list refresh, change folder and info about the select wave file.

## Filter / Equalizer:

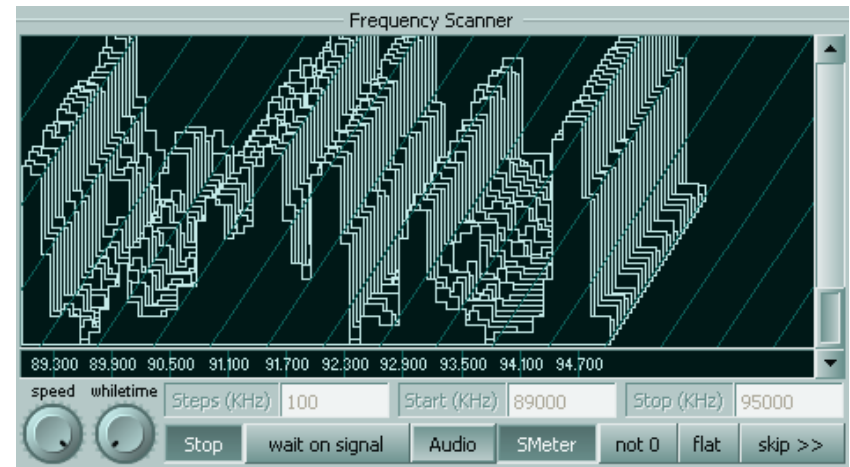


The equalizer can be used like you draw a picture with the mouse. Click anywhere and keep the button down and draw the desired curve of the filter. If you press the right button the position will be brought to the maximum.

### **Activate Decoder filter to Wave-Out:**

The Equalizer-Filter will be switched over to the 'Wave Out'.

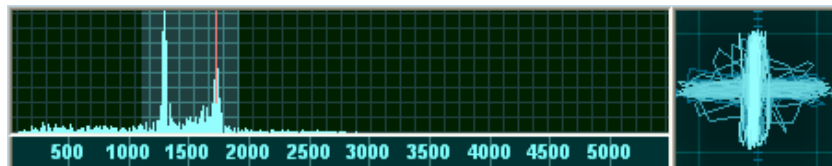
## Frequency Scan:



Only the selected frequencies from the list will run. Pressing the start button starts the scan. The last parameters set in the radio control panel will be used. Only the frequency is changed. The audio or squelch signals as used for that. A signal event occurs when a signal breaks through the squelch and the audio becomes useable. Not all receivers have a squelch control. That is why audio squelch (the control on the Audio Control panel) 'Asql' is a much better squelch. It evaluates the interference much more effectively as compared to signal strength.

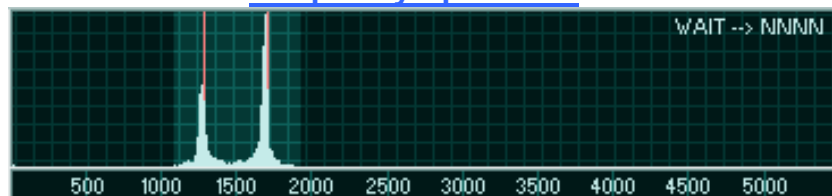
The scan process stops when the 'stop on Audio' or 'stop on Squelch' is pressed. The maximum delay time can be controlled by the value set in 'Stop-Time'. A value of zero (0) means the process is stopped until the signal is off.

### Adjustment Helps:



You'll need help in tuning to adjust a signal to make the program work correctly. The tuning helps will show you where the signal is located and the interference around it. You will be able to tune the signal in real-time visually. The Scope bar contains the Spectrum Analyzer, X/Y Tuning Display, and the Signal Scope. The adjustment helps are shown in the upper part of the screen. They show the incoming audio so that you can adjust the characteristics from the radio. Slowly rotate the tuning knob and see how the program reacts to the changes made.

### Frequency Spectrum:

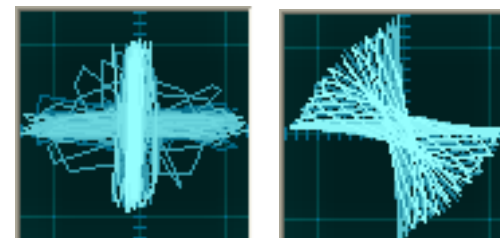


All the audio is displayed and is marked from left to right. The height corresponds to a stronger amplitude sound. You will see how amplitude will depend on the pitch. Always try and find that has the highest amplitude. There are exact technical instructions for which pitch the system is set for. But in practice it depends on the filter curves of the radio. The unedited frequency list is always theoretical and not adjusted to your individual radio.

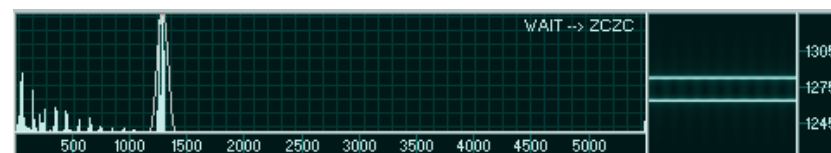
When tuning you should take care that the signal is placed exactly on the red lines. The distance between the lines is the bandwidth (called 'SHIFT'). The horizontal numbers on the scale show the pitch and the vertical lines show the volume. This picture shows a RTTY signal with two different pitches. One for Mark and the other is Space. Both sounds should be placed exactly on the red line. During a fax signal the bandwidth is higher, the red lines farther apart, with the major signal on the red line to the right. The adjustment process is explained in that part of the manual.

### X/Y Tuning Display:

On the preceding page a RTTY signal was used as an example whose adjustment is now displayed on the X/Y display. Get the signal between the red lines (Shift) by using the frequency spectrum. Then get the cross. If that will not work, you can play a little bit with the shift. If the shift is correct, the bars will be placed vertical on top of each other. Finally make sure the crossbars are perpendicular.

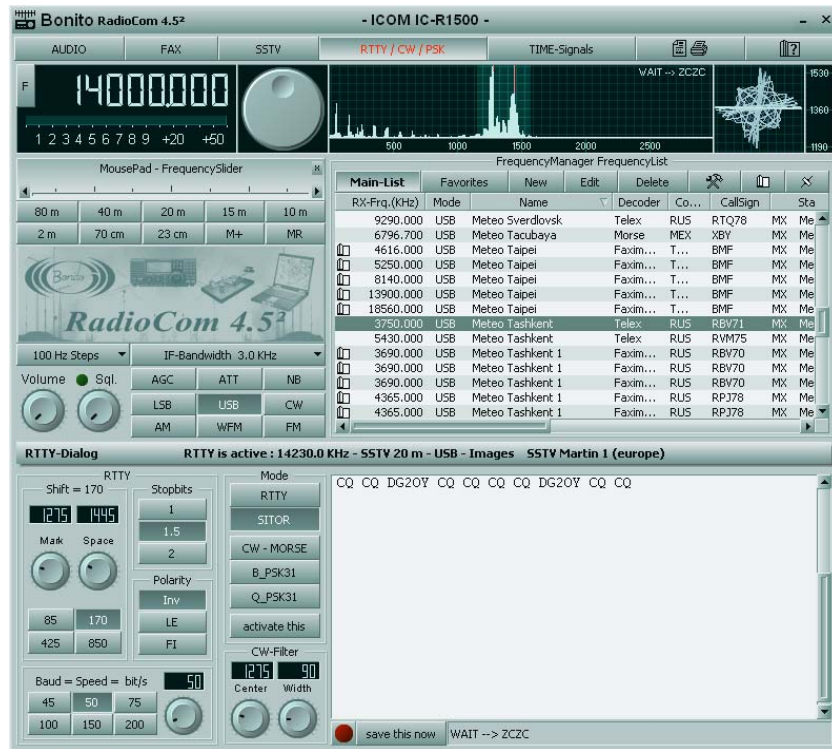


### Q/B PSK:



In PSK mode you will have bright patches in the middle of the display when the signal is properly adjusted.

## RTTY-Decoder



This is how the main screen looks when you are in RTTY mode. The RTTY LIVE VIEW window shows the received text. Normally you see the last line that is coming in live. If you want to see saved text you have to click on the RTTY TEXT VIEW window.

### Save Text/Load/Print:

The whole text message is saved in the text memory. You can save a marked part of a message. You can load the text again in a similar way. The text will be saved as a RTF file. RTF files can be read, edited and printed by Notepad and WordPad. To use these functions right mouse click while in the RTTY TEXT VIEW window and choose the desired function from the popup menu. Create a large text viewer with a double-click into the text field.

### MODE:

**Baudot:** This mode refers to the usual RTTY mode and is an asynchronous mode. SYNOP announcements are also sent in this mode.

**Sync Baudot:** This mode manually synchronizes the Baudot mode.

**Sitor B:** This is a synchronous mode. It uses a self-error correcting method that reduces interference problems. Navtex uses a form of this called FEC, Forward Error Correcting, and is at 100-baud rate.

### Baud rate:

Baud rate is derived from Baudot. It is the speed of the data bits when using RTTY mode. The most common baud rate is 50 baud but commercial stations for weather reports often use 75 to 100 baud. Navtex in Sitor-B mode is 100 baud.

### Shift and Mark Frequencies:

The shift is the distance in time between the two audio frequencies, sounds, which determine the RTTY byte or character. It is shown on the frequency analyzer by the two red lines. The mark frequency determines the position of both red lines and the shift determines the width of the lines.

### Stop Bits:

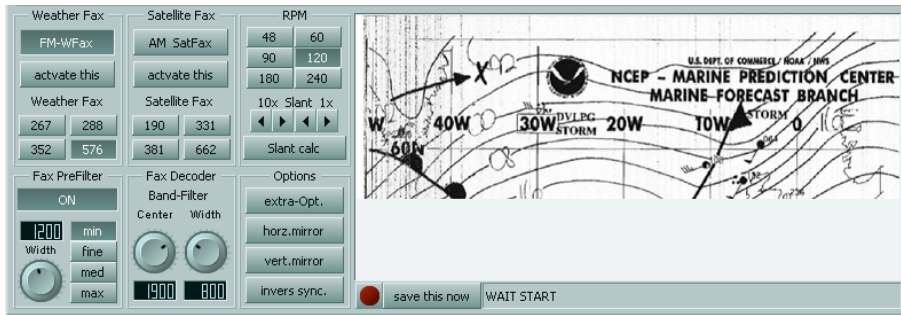
Each character sent in Baudot must have a start bit and either 1.5 stop bits or 2 bits. This arrangement of bits is what determines the code of the character.

### Polarity:

Most receivers and transceivers have USB and LSB functions. Digital data can be sent in either mode. Most of the time stations use USB. If you are not able to decode a station correctly you can try and INVERT the signal. The LE and FI buttons stand LETTERS and FIGURES. There are times when in decoding Baudot the decoder will get 'HUNG UP' in figures or letters. You can force the program to change by clicking these buttons.



## FAX-Decoder



## Picture Receiver:

This window is usable when you receive a fax. It is displayed in reduced size. Right click on the fax window and select the 1:1 big view or make a double-click in the fax window.

### Save:

Activating the AutoSave button (red LED) will start saving the picture from now until the stop signal is received. Normally the program will do this automatically with the incoming start signals. The 'Save This Now' is deactivated when you start the program. The picture may not be synchronized at this moment: press the right mouse button on the margin and the picture will become left synchronized. Click on the LED you change the state of save.

### Save this now:

If you want to save a Fax manually you have to press "save this now". The whole picture will be saved. You can view and edit the picture with the View Fax option.

### Module and Slant Correction (IOC Part):

Weather Fax's usually use an IOC of 576 sometimes 288.

Radio amateurs use 267.

IOC 267:	Direct reception of Meteosat and amateur pictures.
IOC 288:	Small weather maps with about 800-pixel resolution.
IOC 352:	Press pictures with about 1100-pixel resolution.
IOC 576:	Large weather maps with about 1800-pixel resolution.

### Drum Speed:

The drum speed for most pictures received is 120 RPM. Maps from Moscow come with different speed like 60, 90, or 120.

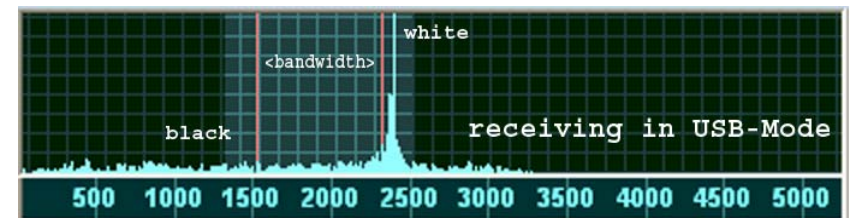
Shift and Center Frequency:

Sometimes it is advisable to move the adjustment of the high signal area to the low. This helps to eliminate unwanted signals. This means you have to move the two red lines on the horizontal scale of the frequency spectrum display.

## Filter, Bandwidth:

You can adjust the filter and the passage area of the filter (brighter area). The filter should go beyond the shift. Other adjustments can make improvements.

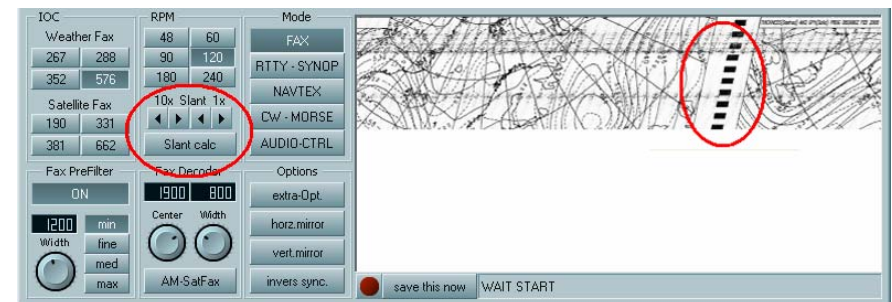
## Spectrum Analyzer:



This is the display for adjusting the sound frequency. Using USB the fax signal will have a pile of bars, which deflects to the end of the left red line. The bright area shows the filters sphere of activity. For getting clear white pictures, the main bar should be located before the red line on the right. If there is interference you can move the center frequency up or down to minimize the bandwidth or change the filter.

## Slant Correction

During the first test the image will come out skewed. In this case you can rectify the image by using the „<“ and „>“ buttons. Always use the button that points in the opposite direction of the skew (e.g. the right button in the case shown in the image below). You can use the **10x** function to do large step correction or **1x** for fine corrections. After completing the correction click on "Slant Calc" which will apply these values to all other modules and fax frequencies.



**Recommendation:** If you are located in Europe, we recommend using the „Northwood RN London“ broadcast station for skew correction. This station transmits a synchronizing signal, which can be used as a marker (red circle on right hand side of the image above).

## CW Decoder



The CW program is like the RTTY program. Tune the signal to the red line. You can do this by frequency or with the mouse moving the signal into the filter (Provided the program is controlling the radio). Adjustment of the filter width is from 10 Hz. to 2.3 kHz. You can change the center frequency with the center control. The 'POS' and 'Zoom' controls will change the position of the signal.

### Save and Print:

You can print and or save received text or just marked text.

### Select Font:

This allows you to change the font style of the displayed text.

### Adjustment:

The signal will have to be tuned so that it is exactly on the red line.

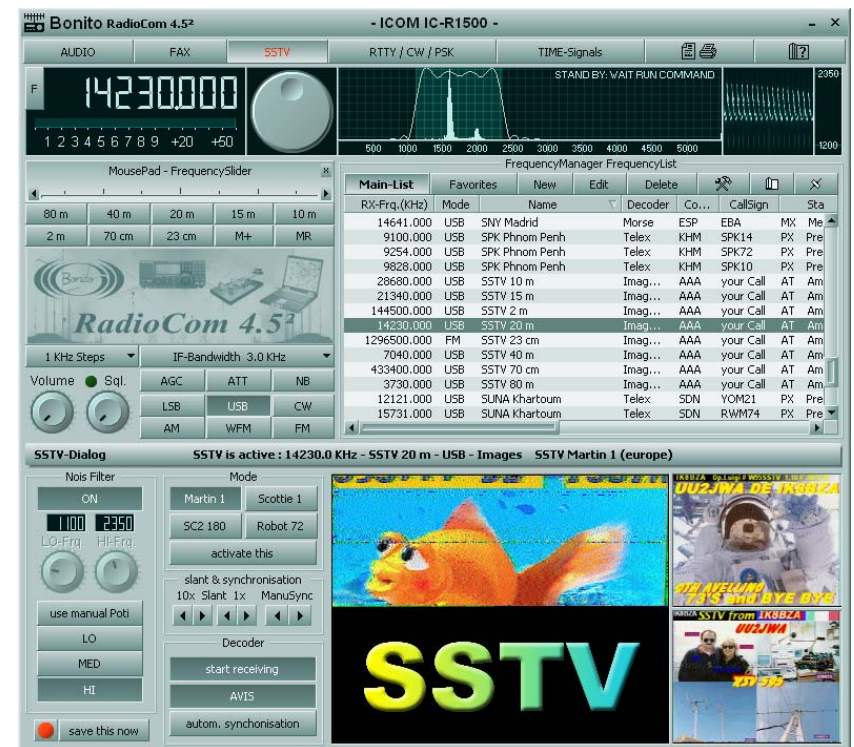
### Center:

Use this control to move the filter horizontally. This will change the center frequency.

### Width:

This control changes the bandwidth of the filter.

## SSTV Decoder



Looking at the Picture Receiver/Explorer window the left part of the window will show the received picture. The center will show the saved picture and the right will show the file name of the saved picture. You can select a file name and load a saved picture into the editor. If you double click the picture in the receive part of the window it will be displayed 1:1.

In the control section of the screen you will be able to work with the filtering options. There is a quick select function for changing frequencies. This is in a box labeled SSTV-Freq.

With the 'M+' button it is possible to save a tuned frequency. If you tune to something new you can return to the old saved frequency with the 'M-' button.

### Tuning:

A small bright area will be visible on the left of the frequency spectrum. This appears sometimes on the red line. The red line indicated the synchronizing of the signal at 1200 Hz. You should tune until the whole signal fits in the marked filter area. Good tuning shows clear colors. Off shades signify improper tuning. The filter section has 3 variable adjustments; one manual and 3 preset selection's 'LO' 'MED' and 'HI'.

### Mode:

You can choose between the 4 different modes.  
Martin 1, Scottie 1/2 and Robot 72.

### SSTV-FREQ:

These buttons change the radio to different preset frequencies in the program.

### AVIS:

There is a start signal in a SSTV signal. This automatically starts the reception of a picture and saves it at the end of the transmission. This does always work. You will have to press **Receive** to start reception. **Autosync** will try to synchronize the picture. Pressing the 'Autosync' button will resynchronize the picture until the colors are right. Then you can correct the picture with **ManuSync** placing it the proper position.

### SSTV SLANT Correction:

You can correct the slant of a picture by using the '10x or 1x' slant buttons. You should press and hold the button until the picture is straight. The correction factor is either 10 pixels or 1 pixel per single click of the button. Pressing and holding the button will provide a quicker correction.

The 'Save This Now' button will save the picture in the receiver window. The 'AutoSave' button will save the picture when the lower edge is reached. You can load and print the picture.

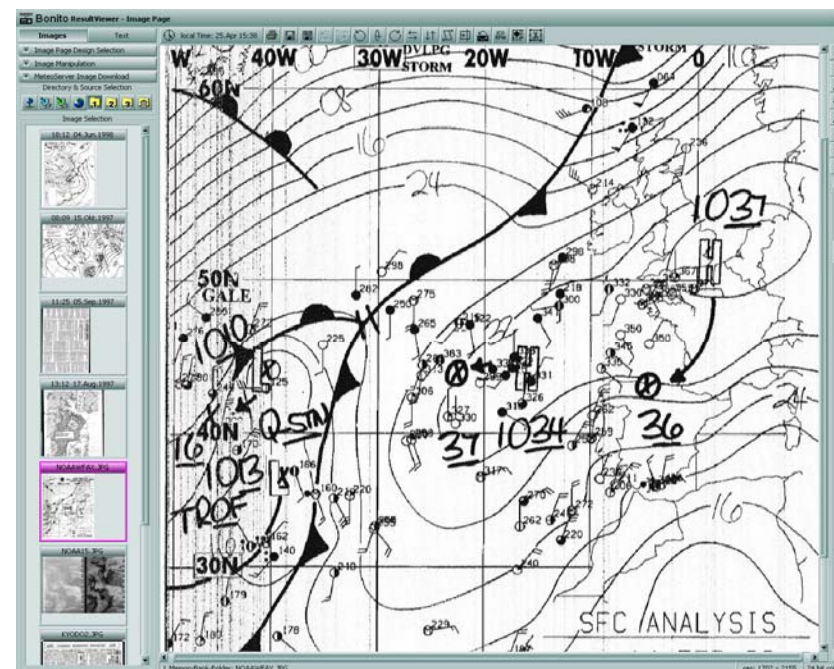
## ResultViewer

RadioCom comes with the ResultViewer. This is where all saved Pictures and so on displayed, that where received from the SSB Radio. There are two categories: „Images“ and „Text“.

You can open this Viewer by pressing this Button:



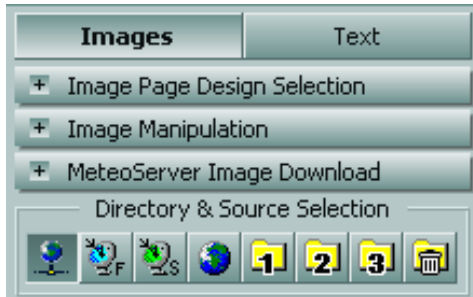
## Images



Here all types of images are displayed, those downloaded from the Internet and those received in SSB.



## Directory and source selection



This is where the sources of the various images are:

Weather maps received on the radio, saved and deleted images.

If you would like to archive images, simply drag and drop them to one of the „banks“. The „automatic deleting routine“ will not delete images saved there.

„Images selection“ contains images sorted by date. Double-clicking an image will bring it up in the large window on the right where it can be viewed and edited.

You navigate the WeatherFax using the up/down and left/right buttons. You can also use the black arrows on the right. The button below the arrows switches the map back to the overview. The image can be zoomed in or out using the magnifying glass symbols. You can also select a portion of the image with your mouse. Point your mouse pointer to the upper left corner of the area you would like to select, click the mouse button and then pull the mouse to the lower right until the desired area is inside the marked area. Release the mouse button. ResultViewer will zoom into the selected area.



Below the navigation bar there is a slider, which makes zooming even easier. Point your mouse to your position and click on the right mouse button. A context menu will open. Select „Set fixpoint“. If you now use the zoom slider, you will always zoom back to the selected position. Even when you are zooming into other areas you simply need to touch the slider to get back to where you were before.

A received WeatherFax is an image that can usually be edited with common Windows programs. However, there are no special tools that would enable you to improve fax reception. With this program you can rotate and synchronize fax images much more quickly because they are designed specifically RadioCom.



### Save and print FAX

The image can be saved and printed. The regular processing windows appear without any special attributes.

### Slide bar +/- Zoom

The image can be enlarged or minimized using the „plus“ and „minus“ buttons. In overview mode you can select a certain area with your mouse. This is possible only once.



### Synchronize

If you have received an image where the left edge is displayed in the center of the image, you can use this function for subsequent synchronization. First click on the button. Now select the exact spot where you want the edge to be.



### Skew correction

Use this function when an image comes in skewed. Click on the upper edge of the image and draw a line along the skewed edge of the image. Clicking again will correct the image.



### Crop image

Click on the button. Then click your left mouse button and draw a rectangle around the area you want to crop. Release the mouse button. You can now still manipulate the area by clicking on the edges and pulling them to a different position. Clicking the right mouse button will finalize the crop.



### Invert image

You can receive a fax image in LSB reverse. You do that to improve image quality. The image will be received inverted. This function will revert the image to normal.



### Rotate image

If the image is arranged wrongly you can rotate it here.



### ICO RPM:

If a fax has been recorded with a wrong module or at the wrong speed, it can be turned into readable form here.



### Contours, Soften, Sharpen, Brightness

„Contour“ displays lines such as isobars more clearly. If a line has been drawn very softly you can enhance it with this effect. “Soften” and “Sharpen” add a softening or sharpening effect to the image. “Brightness” controls the contrast of the image.

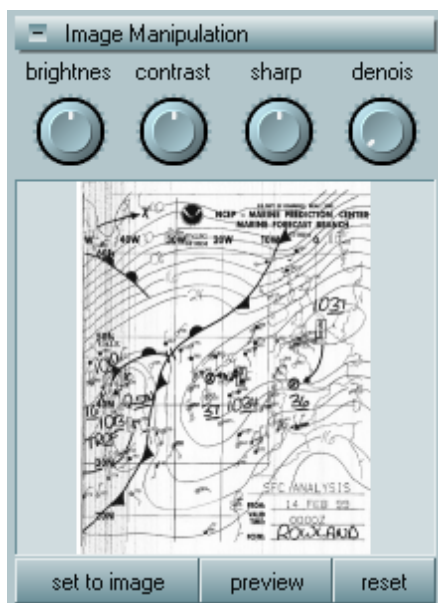


### Undo / Redo

Use the UNDO command to reverse the last editing action, if possible.  
Use the REDO command to reverse the UNDO command.

## Image Manipulations

A received weather map is an image that can usually be edited with common Windows programs. However, there are no special tools that would enable you to improve fax reception. With this program you can rotate and synchronize fax images much more quickly because they are designed specifically for RadioCom.



## Image Download



With RadioCom 4.5<sup>2</sup> you have the possibility to download Satellite Images to your Computer and RadioCom create automatically animations. Since these pictures are not forecasts you can select the time frame for satellite pictures in the “load pictures for...” selection box. The maximum amount is 24hours. Select the desired pictures you want to download in the „Image List”.



### Switching local time to UTC/Clock

Weather data are always in UTC. To get a better overview of the forecast you can switch to local time.

### Print

Printing the Picture

### Speed controller

This controller sets the speed at which animations are played. The speed is also dependent upon the processing speed of your PC.

### Play

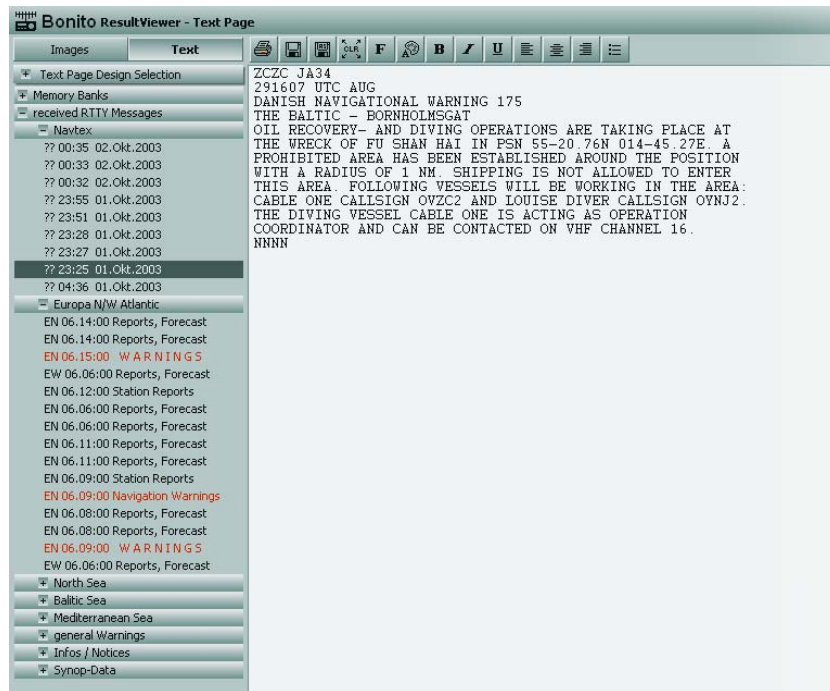
Forward and backward.

### Time slider

By moving this slider to the left or right you can move data manually.

## Text

This is where all received text messages such as forecasts, warnings, NavTex, etc., are displayed. Texts belonging to certain areas will be stored in the respective folders. Forecasts for the Mediterranean can only be found in that folder. This makes finding the proper forecast much easier.



## Icon bar Text

This bar contains the following symbols:



### **Cloud**

Brings RadioCom to the foreground

### **Print**

This will print text messages

### **Save + Save as**

Here you can save a text or overwrite it.

### **CLR**

Deletes the text.

### **Format**

This is where you can format a text.